

# 120 MSSSC NEWS

A Continuum of Care



NOVEMBER  
2023

## INSIDE

- NOVEMBER 2023 PRESIDENT'S MESSAGE, **PAGE 2**
- RETIRED DOCS CELEBRATE 100 YEARS, **PAGE 2**
- PHYSICIAN ENGAGEMENT: SNAPSHOTS FROM BLACK DOCS MIXER AND FROM ANNUAL LEGISLATIVE DINNER, **PAGE 3**

*Physicians  
who care for ...  
our patients,  
our community,  
and our profession.*

**MSSSC**  
MEDICAL SOCIETY of  
SEDGWICK COUNTY

www.mssconline.org  
1102 S. Hillside  
Wichita, KS 67211  
(316) 683-7557

## Child deaths down but homicides up

A new report showed an overall drop in child deaths in Kansas but with two major concerns: Child homicides were at a 23-year high, and drug-related deaths have increased significantly in recent years.

The State Child Death Review Board of Kansas analyzed the deaths of Kansas children that occurred in 2021, the most recent year data was available. It reported there were 349 child fatalities that year, which was a death rate of 49.6 per 100,000 population. That's the lowest number and rate since the review board was created in 1994.

A big driver of this decline was death due to natural causes; 101 fewer children died from natural causes in 2021 than in 2018. The rate of death due to suicide also has shown a downward trend since 2018, when youth suicides peaked in both Kansas and the U.S.

But while total deaths dropped, child homicides were up sharply. There were 32 child homicides in Kansas in 2021, a 45% increase from 2020 and the highest

total since 1998. Drug-related deaths also increased, fueled by the rise of fentanyl. There were 20 deaths from fentanyl in 2020-21, compared with none from 2017-19, according to the report.

Also of note, firearm deaths nearly doubled over the past five reporting years. In 2021, there were 44 firearm deaths, which means that more children died from firearms than from injuries sustained in motor vehicle crashes.

The report also found disparities between race/ethnic groups. Over 2017-21, Black/non-Hispanic children had a rate of death higher than the Kansas rate in all categories except for suicides.

"We know that behind each of these statistics are the stories of children who lost their lives too soon," Sara Hortenstine, the board's executive director, said in a news release. "...We must learn from these difficult circumstances and take action to prevent future deaths of Kansas children."

## MSSSC member moved by plight of Ukrainian patients



**A CAVALCADE OF SURGERIES:** NATALIYA BISKUP, MD, PERFORMED ABOUT A DOZEN SURGERIES OVER FOUR DAYS IN UKRAINE.

Plastic surgeon Nataliya Biskup, MD, came away from her 10-day mission trip to Ukraine in October moved by the resilience of her patients – Ukrainian soldiers who had suffered grave head and neck injuries in the fight against Russia.

Biskup, who was born in Lviv and moved with her family to Phoenix when she was 8, also marveled at the resolve of the people of Ukraine.

"They're still so determined that Ukraine is going to win, that 'we're going to get through this, God is with us.' ... People there are much more fearful that the world is going to forget about Ukraine," said Biskup, who practices at Plastic Surgery Center in Wichita. Next year she will see patients at Hutchinson Clinic and do surgeries at Wesley

## MSSSC annual meeting focuses on past, future

MSSSC's annual meeting on Dec. 5 will celebrate the past while also looking to the future, as WSU President Rick Muma and KU Executive Vice Chancellor Robert Simari, MD, will discuss the planned new joint bioscience center.



Muma



Dr. Simari

As part of MSSSC's 120-year anniversary celebration, MSSC President Maurice Dug-gins, MD, will reflect on the society's long history and how the work and concerns of early physicians were similar to ours today. MSSC also will recognize its past presidents and executive directors and the past presi-

PLEASE SEE UKRAINE SURGERIES, PAGE 2

PLEASE SEE ANNUAL MEETING, PAGE 2

# Early cooperation, advocacy set stage for today's MSSC



**Maurice Duggins, MD**  
November President's Message

One hundred and twenty years is a significant amount of time on Earth. When we speak of human life spans, 120 years is near the record.

When the Medical Society of Sedgwick County was founded in 1903, I doubt those early physicians could have imagined what MSSC would look like 120 years later. But for the sake of the people and the profession, they had a "coming to Jesus" moment to set the stage for working together. That cooperation and advocacy are what set the stage for today's MSSC.

One of the many things that I've learned from my service at MSSC is that advocacy never ends. As with time, there's a constant change, and with that comes new challenges. What can we do to improve service to our patients? What can we do to keep the respect and trust of our profession? What do we need to do to reduce burnout of our partners? How can we make legislative changes that benefit the most people while not leaving out the most vulnerable?

Most of us want to help others. That is why we chose medicine. It has not always been easy. Caring can be easy to forget when we get caught up in the daily grind, the repayments of debts and the disappointments when appreciation is not shown for the work we have done or the lives we have saved.

But we must be hopeful about medicine. Hope is what keeps

us motivated, encouraged and willing to serve. We have done well over the past 120 years. We must continue to advocate for physicians for the next 120 years.

We must continue to advocate for physicians to be free to help patients without non-science intrusions from others. We must continue to speak truth to all legislators, and we must educate them on what we do and why we do what we do. Our system is sometimes so complex that many people could use a navigator to help guide them through. As we look to the future, we must dream of what "better" looks like and then do the work needed to make that happen.

I always try to remember to remain humble no matter where I am in this highly regarded profession. Without humility, we miss teachable moments. When the patient questions my judgment, it is a teachable moment. When they doubt the diagnosis I just confirmed, it becomes a teachable moment. When they want to get a second opinion, it is also a teachable moment. No love lost, no animosity, and no taking offense. We know we are not gods. We are not invincible. We are not unbreakable. And, yes, sometimes we are wrong and must be willing to admit it.

I want to thank MSSC for allowing me to serve during this celebratory year. I really appreciated the leadership and support at MSSC. It is very strong. Its executive director, Phillip Brownlee, and his right-hand person, Denise Phillips, have been great to work with. They are our best advocates, and I am profoundly grateful for having the opportunity to work with them over the past year.

## UKRAINE SURGERIES CONTINUED FROM PAGE 1

Children's Hospital.

The trip to Ivano-Frankivsk in western Ukraine by five surgeons from the U.S. and Canada was arranged by the Face the Future Foundation, a Toronto-based nonprofit that coordinates facial plastic reconstructive surgery for disadvantaged patients around the globe.

Biskup traveled with a scrub tech, a nurse and a nurse practitioner, she said, and "they really have hardly anything there, so we brought all our own instruments, our own sutures."

Of the 300 who applied for help, 32 soldiers were selected for surgery. Biskup performed about a dozen surgeries over four long days, she said. Some involved patient-specific implants from biomed companies, so planning was key.

"There's a lot of blinding injuries. I would say almost every one of these guys was blind in one eye or both eyes," she said.

The bombardment of Ivano-Frankivsk increased after their visit, she said, adding that she slept through the single air raid siren. "It's kind of surprising -- everybody has kind of gone on with their routine, going to work and school," she said.

Biskup said the "trip felt to me like the tip of an iceberg, like there's so much work to be done there," mentioning a need for orthopedic and oral surgeons. Any MSSC colleagues inspired to donate time, effort or money can contact the organization at [www.facethefuturefoundation.ca](http://www.facethefuturefoundation.ca) or (416) 686-9110.

## In Brief ►►

### New and noteworthy

### Happy 100-year birthdays to two retired physicians

MSSC's RODEO group (Retired Older Docs Eating Out) celebrated last month the 100-year birthdays of two members.

Lueke Lueken, MD, (left) turned 100 in October, while Lew Purinton, MD, turned 100 last January. Happy birthday!



## ANNUAL MEETING CONTINUED FROM PAGE 1

dents of the MSSC Auxiliary and Alliance, spouse organizations that supported various causes.

Muma and Simari will share plans for the new bioscience center, which will house portions of the KU School of Medicine-Wichita, the KU School of Pharmacy-Wichita, WSU's College of Health Professions and WSU Tech's Health Professions program. Construction on the downtown campus is expected to start in early 2024 and be completed in 2026.

### ► MSSC Annual Meeting

**WHEN:** 6-8 p.m. on Tuesday, Dec. 5, 2023

**PLACE:** The Vail, 210 N. Mosley St. in Old Town

**COST:** FREE. Includes dinner and drinks. Spouses welcome.

**RSVP:** Call (316) 683-7558 or e-mail Denise Phillips at [denisephillips@med-soc.org](mailto:denisephillips@med-soc.org)



# Physician ENGAGEMENT

TOP HALF: MSSC held a mixer recently for Black physicians, medical students and residents at the Kansas College of Osteopathic Medicine. LOWER HALF: Physicians, Kansas lawmakers and guests gathered for MSSC's annual legislative dinner at the Drury Plaza Hotel Broadview.



▲ RICHARD MURAGA, MD, AND JANE GITAU, MD



▲ TRISH BROWN AND VAL BROWN JR., MD



▲ FAZAL YAKUB, MD, RICHARD MURAGA, MD, MAURICE DUGGINS, MD, AND DAVID MAUNDU, MD



▲ BERNARD KNOWLES AND RHEA ROGERS, MD



▲ MEDICAL STUDENTS AND PHYSICIANS GATHER AT KANSASCOM



▲ SYDNEY WOODSON, TYLER WILSON, MS2, AND KWAME EAGLETON, MD



▲ ASHLEY ROBBINS, MD, AND DONNA SWEET, MD



▲ MAURICE DUGGINS, MD, AND REBECCA REDDY, MD



▲ PAUL TERAN, MD, GRETCHEN HOMAN, MD, REP. SANDY PICKERT, AND STEPHANIE KUHLMANN, DO



▲ KMS EXECUTIVE DIRECTOR RACHELLE COLOMBO AND JAY GILBAUGH, MD



▲ REP. HENRY HELGERSEN, BECKY FOSTER, DO, BRADEN FOSTER, DO, AND TUAN NGUYEN, MD



▲ PHILLIP BROWNLEE AND REP. TOM KESSLER



## MEDICAL SOCIETY OF SEDGWICK COUNTY

### Proposed Budget for 2024

#### Revenues

Dues income	\$368,000
Roster income	40,000
Advertising and Sponsorships	66,000
Interest income	26,600
Dividend	50,000
Rental Income	84,776
Professional consulting fees	92,282

**Total Revenues** \$727,658

#### Expenses

Salaries	\$449,794
Salary credits	(147,010)
Retirement	21,660
Payroll tax - FICA	20,580
Unemployment taxes	207
Verification review	750
Telephone	4,740
Electricity	16,500
Water	7,000
Janitorial supplies	3,750
Gas utility	4,500
Maintenance and repairs	11,000
Postage	12,600
Grounds maintenance	9,000
Maintenance contracts	15,600
Insurance	38,363
Credit card processing fees, bank charges	9,500
Office supplies and printing	8,500
Computer and internet expense	22,500
Automobile expense	500
Meetings	30,000
Meals	3,500
Public relations	500
Marketing expense	500
Professional services	6,750
Travel	15,000
Awards and appreciations	1,800
MSSC News	27,000
Dues and subscriptions	7,000
Roster expense	50,000
Wellness program	734
Donations	17,000
Property taxes	3,000
B & I depreciation	20,000

**Total Expenses** \$692,818

**NET INCOME** \$34,840

## Auxiliary led effort to clean up creek

MSSC's 120-year history has been enhanced and supported by physician spouses. The MSSC Auxiliary, which later became the MSSC Alliance, was founded in 1928 and spearheaded many community initiatives and drives, including education and conservation programs.

One such effort was a stream-clean-up project that received state recognition and led to the creation of a bike path and other improvements.

On April 22, 1990, the 20th anniversary of Earth Day, Auxiliary members and other volunteers gathered trash from Gypsum Creek, which runs alongside S. Armour Street west of Towne East Square. At the time, the creek was filled with trash and its water was polluted, even though it was frequented by wildlife.

"It looks like a trash dump," Auxiliary member Trish Ziegler told the Wichita Eagle.

The Auxiliary formally "adopted" the creek and committed to its ongoing cleanup. The Auxiliary also convinced businesses in the area to help prevent pollution and worked with the Kansas Department of Health and Environment to identify sources of toxic waste.

The Auxiliary helped secure a federal grant and worked with the city to build a bike path and trail, later named after Sylvia Hirahara-Hartley, an Auxiliary member who helped lead the project and who died in a car accident with her husband, Dr. Fount Hartley.

In recognition of its efforts, the Auxiliary received a conservation award in 1995 from the Kansas Wildlife Federation.



## Healthcare banking for healthy results.

Simmons Bank has decades of healthcare banking experience and undeniable expertise. But it's our unique, customizable treasury and revenue cycle management solutions that guide you toward a healthy financial future.

We are a one-stop shop for all your healthcare banking needs, offering flexible financing to construct or expand your practice and equipment leasing to help you keep up with technology innovations.

Contact us today and learn how our healthcare banking specialists can help ensure your healthy future.



Member FDIC | [simmonsbank.com](https://simmonsbank.com)

**Dreams: Realized**

# ROSTER UPDATE

Keep your 2023 roster current with this information.

Key: [BC] Board Certified [F] Accredited Fellowship [R] Residency [AT] Additional Training [F\*] Unaccredited Fellowship

## CHANGES

### Samuel L. Ashby, DO

[R] Orthopaedic Surgery  
[F\*] Adult Reconstructive Orthopaedics  
Advanced Orthopaedic Associates, PA (12/1/23)  
OFF: 316-631-1600  
FAX: 316-631-1675  
9828 E Shannon Woods S-100, 67226

### Kevin R. Brough, MD

Heartland Dermatology and Skin Cancer Center, PA  
FAX: 316-223-4838

### Justin L. Gooden, MD

MK Wound & Limb Preservation  
OFF: 316-910-0024  
FAX: 316-910-0023  
10346 E Stonegate Ln, 67206

### Christopher R. Halphen, DO

[BC] Orthopaedic Surgery  
[F\*] Musculoskeletal Oncology  
Advanced Orthopaedic Associates, PA (12/1/23)  
OFF: 316-631-1600  
FAX: 316-631-1621  
9828 E Shannon Woods S-100, 67226

### Patrick G. McEnulty, MD

[BC] Diagnostic Radiology  
Wichita Radiological Group, PA

### Bradley M. Saunders, MD

[BC] Orthopaedic Surgery  
Advanced Orthopaedic Associates, PA (12/1/23)  
OFF: 316-631-1600  
FAX: 316-631-1618  
9828 E Shannon Woods S-100, 67226

### Vanessa L. Voge, MD

Heartland Aesthetica  
FAX: 316-712-4182

### Herington Municipal Hospital

Closed 10/9/23

## RETIRING

Michelle M. Louis, DO – 12/31/23

Grant P. Rine, MD, PhD – 12/31/23

Patty L. Tenofsky, MD – 1/12/24

## DROPPING

Anita Campbell, MD – Moving out of area

Jordan D. Groskurth, MD – Moving out of state

Ashraf Jmeian, MD – Moving out of state

Delane H. Vaughn, MD – 12/31/23

## In Remembrance

MSSC extends its condolences to the family of Dr. Jester.

► Retired Wichita anesthesiologist **Shelby L. Jester, MD**, died Oct. 1 in Switzerland, which she considered her second home. She was 80.

Jester was born in 1943 in Independence, Missouri. She graduated in 1974 from the Medical College of Pennsylvania (now part of Drexel University) and did her residency at the University of Missouri. She was licensed to practice in Kansas 1978-2007 and was a member of the MSSC from 1979-1994.



DR. JESTER

## In Brief ►►► New and noteworthy

### Medicare rates cut again

Physicians are scheduled to receive a 3.4% cut next year in their Medicare reimbursement, the second consecutive year of declining reimbursement rates. Under a final rule released this month by CMS, the physician fee schedule conversion factor is \$32.74, a decrease of \$1.15, or 3.4%, from 2023. Additionally, CMS is reducing the anesthesia conversion factor from \$21.12 to \$20.43.

The cuts coincide with ongoing growth in the cost to practice medicine. CMS projects the increase in the Medicare Economic Index for 2024 will be 4.6 percent.



ENDORSED BY MEDICAL SOCIETY OF  
SEDGWICK COUNTY  
FOR DISABILITY INCOME PROTECTION  
PLANS

#### ALSO PROVIDING:

- ♦ 401(K) PLANS & SIMPLE IRA SERVICES
- ♦ FINANCIAL & ESTATE PLANNING
- ♦ LIFE INSURANCE - PERSONAL & BUSINESS
  - ♦ INVESTMENT MANAGEMENT
  - ♦ EMPLOYER PROVIDED GROUP INSURANCE BENEFITS
- ♦ PATIENT MEDICARE EDUCATION

316-685-9296

5940 E Central, Wichita, KS 67208

[WWW.SCHRECKFINANCIAL.COM](http://WWW.SCHRECKFINANCIAL.COM)

Securities offered through Registered Representatives of Cambridge Investment Research, Inc., a broker-dealer, member FINRA/SIPC. Schreck Financial Group and Cambridge are not affiliated.

# UPDATE

November 2023

## Central Plains Health Care Partnership

From the executive director



SHELLEY DUNCAN



### CONTACT US

1102 S. Hillside  
Wichita, KS 67211  
(316) 688-0600  
[www.cphcp.com](http://www.cphcp.com)  
[www.healthict.org](http://www.healthict.org)

### Donate now!



Find us on  
**facebook**

Project Access held a very successful Altogether for Access fundraising event on Sept. 21 at Dr. Donna Sweet's house. Many physicians and their spouses attended the event, which raised over \$41,000 to support the operations of Project Access. We are very grateful to each one of you who attended, and we are grateful to our event planning committee, which includes Dr. Lynn Fisher. We are also very thankful to Dr. Amanda Valliant, who was the emcee for our Fund the Need portion of the event. Next year will be our 25th anniversary and we are already planning for a larger event to honor the many people we have served, the thousands of physicians who have donated millions of dollars in care and treatment, and our ongoing funders – the City of Wichita, Sedgwick County and United Way, and, of course, all of our individual donors who generously support us.

Project Access received a grant through the Kansas Department of Health and Environment that will focus on increasing COVID vaccinations among targeted populations, including low income Black, Hispanic/Latino and Vietnamese individuals. The PAVE (Pandemic Assistance and Vaccine Equity) grant began in October and will continue until the end of 2024. We have hired our second Community Health Worker to help execute the contract. We will collaborate with many different organizations to help us spread the word about the vaccines and to help dispel any myths that may create a barrier for people to become vaccinated. There are local pharmacies and clinics that will provide free vaccines to those without insurance. Please reach out to me at [shelleyduncan@cphcp.com](mailto:shelleyduncan@cphcp.com) or (316) 680-6126 if you would like more information and/or patient-facing brochures.

We will soon be adding to our scope of services through a partnership with Wichita State University Psychology Department's Psychology Clinic. The clinic will be donating care to Project Access clients who need mental health treatment. This is a small pilot project that we are hoping will expand to other local clinics or providers who have a more expansive scope of care including psychiatry. For our existing network of donating physicians, you are welcome to refer any of your existing Project Access patients to us for mental health care and treatment. If you have any questions about this area or questions about someone you believe might need therapy or other interventions, please contact me.

We also are pleased to announce a new partnership with the University of Kansas School of Medicine-Wichita's Department of Public Health and its Facts Not Fear-ICT project. This project will focus on those of our clients receiving donated mental health care and will offer support and training on ways to improve cultural competence for Project Access staff as well as the WSU Psychology Clinic and any other clinics we may engage next year. The project provides tools for Project Access to screen for domestic violence and substance abuse, and provides assessments to participating clients who will rate their experience with their provider.

We are very pleased to announce we have three new board members: Hilary Walbridge, chief operating officer with Ascension Via Christi Health; Dr. Sheryl Beard, chief medical officer with Ascension Via Christi Hospitals Wichita; and Dr. Amanda Valliant, a nephrologist with Wichita Nephrology Group.

As we close out this year, I want to extend my deepest appreciation to all of you who have supported Project Access during the last 25 years. You have donated more than \$250 million in care and treatment to over 15,000 individuals in our community. We wish all members of the Medical Society a safe and prosperous 2024.

*Shelley Duncan*  
Executive Director



## About Project Access

In 1999, Project Access began coordinating access to donated medical care for uninsured, low-income residents of Sedgwick County. Thanks to our founding funders – United Way of the Plains, the City of Wichita and Sedgwick County – Project Access is still able to serve the community today. This is who participates in Project Access:

- 640 physicians
- Eight hospital systems
- 14 dentists
- 85 pharmacies
- Other allied health care services, such as physical therapy and hospice care

Project Access and its community partners serve patients in many locations. Eligible uninsured patients are enrolled for limited periods of time to address immediate medical needs. Once enrolled, patients have access to a variety of specialists, as well as prescription medication, durable medical equipment and diabetic supplies. Since 1999:

- 15,245 patients served
- \$58,870,208 physician contributions
- \$199,059,168 hospital contributions
- \$157,100 dentist contributions
- \$5,864,181 purchased medications and durable medical equipment
- \$6,273,593 donated medications
- 42,354 tests utilized through the Coalition Test Project

## Project Access The Fundraiser

Project Access held it's third annual Altogether for Access event in September, raising more than \$41,000! Thank you to everyone who made this happen! The highlight of the event was when former Project Access client, Sean Cabral, who is now able to work full time and has insurance, spoke about his experience and then wrote a \$1,000 check to Project Access, asking others to match his gift.



▲ Sean Cabral



▲ A lovely night in Dr. Sweet's backyard



▲ Preston Sauers and Lynn Fisher, MD



▲ Terri Cusick, MD, and Jennifer Becker



▲ Fern McGehee, Julia Thatcher with KSN, Betsy Bloxham



▲ Monica Roth and Donna Sweet, MD

# MSSC NEWS

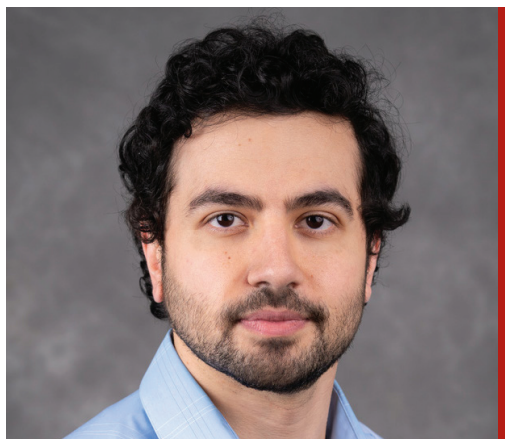
MEDICAL SOCIETY of  
SEDGWICK COUNTY 1102 South Hillside • Wichita, KS 67211  
www.mssconline.org • (316) 683-7557

The MSSC News is published monthly by the Medical Society of Sedgwick County, Kansas. The Society does not necessarily endorse all the views expressed in this publication.

Managing Editor: Phillip Brownlee, Executive Director

*ADDRESS SERVICE REQUESTED*

Presorted  
Standard  
U.S. Postage  
PAID  
Wichita KS  
Permit No. 640



**YAZAN ALKAWALEET,  
M.D., F.A.C.C.**

*Board Certified in:* Cardiovascular Diseases,  
Interventional Cardiology – Board Eligible,  
Echocardiography, and Nuclear Cardiology

Heartland  
Cardiology  
proudly  
announces  
the addition  
of two new  
physicians!



**MAHEEDHAR GEDELA, M.D.,  
F.A.C.C., F.S.C.A.I.**

*Board Certified in:* Cardiovascular Diseases,  
Interventional Cardiology, Echocardiography,  
Nuclear Cardiology, and  
Cardiac Computed Tomography

**Call for an appointment: 316-686-5300**