

120 MSSSC NEWS

A Continuum of Care



SEPTEMBER
2023

INSIDE

- SEPTEMBER 2023
PRESIDENT'S
MESSAGE, **PAGE 2**
- PHYSICIAN
ENGAGEMENT: MSSC
HOSTS SEN. ROGER
MARSHALL AT HEALTH
CARE FORUM
PAGE 3
- WALKING IS GOOD
MEDICINE, **PAGE 4**

Join efforts to prevent physician suicides

One in 10 physicians contemplates suicide in his or her career, and 300-400 U.S. physicians die by suicide each year, according to national estimates.

It's not just a national concern. MSSC has lost members to suicide, and in the past seven years, more than 30 local health care providers (including non-physicians) have died by suicide, according to the Sedgwick County Suicide Prevention Coalition.

September is Suicide Prevention Month, and Sept. 17 was National Physician Suicide Awareness Day. As part of these campaigns, MSSC is highlighting the heightened risk physicians face, ways physicians can support each other, and some of the resources available.

Higher rates of burnout, suicide

"Residents, physicians and medical students have higher rates of burnout, depression and suicide than the general population," Nicole Klaus, a psychologist and associate professor at KU School of Medicine-Wichita, said in a presentation on preventing physician suicides.

This disparity is particularly high among female physicians, who have suicide death rates that are 250% to 400% higher than females in other professions, according to the American Foundation for Suicide Prevention. Among residents and medical students, suicide is the second leading cause of death.

The stress and demands of work are key factors why physicians are more at risk. But another factor is that physicians may not seek professional help for depression or suicidal ideation.

"Physicians are not known for being good patients or taking good care of themselves," Klaus said. "And physicians and trainees are less likely to seek mental health treatment when it is needed."

Look out for each other

As a result, it is important that colleagues look out for each other and intervene when needed. Klaus says to pay attention if



another physician talks about being a burden, feeling trapped, or feeling hopeless or helpless. Behavioral warning signs include using alcohol or drugs more often, acting recklessly or aggressively, and withdrawing from activities and loved ones. Mood warning signs are depression, loss of interest, rage or anger, irritability, humiliation or anxiety.

If a physician is concerned about a colleague, reach out and ask how the person is doing. Don't assume that someone else will or has already done that. Also don't assume that accomplished peers never struggle.

PLEASE SEE **SUICIDE**, PAGE 2

Q&A with MSSSC mainstay Denise Phillips



Phillips

Much has changed at MSSSC during its 120 years of existence. But for the past four decades, there has been one constant: Denise Phillips. We asked Denise about her time at MSSSC and the various hats she has worn.

What different roles have you had at MSSSC?

I started in 1984 as a temporary secretary with one of MSSSC's affiliated companies, Medical Society Medical Review Foundation (a predecessor to ProviDRs Care). That job became per-

manent after a year. From 1992 to 1995, I was both MSMRF secretary and the MSSSC paging secretary – back in the time when MSSSC leased pagers to physicians. I also inputted data for the Kansas Physician Information Verification Program (the predecessor of MPR). From 1996 to 2008, I was membership and paging coordinator. Since 2008, I've been the MSSSC executive assistant. I love to help wherever I can.

How has MSSSC changed since you started working there?

I have worked for four different executive directors, each with

PLEASE SEE **PHILLIPS**, PAGE 5

Physicians
who care for ...
our patients,
our community,
and our profession.

MSSSC
MEDICAL SOCIETY of
SEDGWICK COUNTY

www.mssconline.org
1102 S. Hillside
Wichita, KS 67211
(316) 683-7557

Women physicians have long history in Wichita, MSSC



Maurice Duggins, MD
September President's Message

Women physicians may seem like a relatively modern occurrence, given the career and educational barriers women have faced. But half a dozen women practiced medicine in Wichita between 1875 and 1903, the year of the Medical Society of Sedgwick County's founding.

One of the best-known early physicians was suffragist Dr. Nan-
nie Stephens, who practiced in Wichita for 15 years. She moved to Kansas City in 1895 amid a notorious divorce that prompted The Wichita Eagle to declare: "It would seem that the girl who chooses a professional life should eschew matrimony — motherhood."

Dr. J. Ada St. John, who shared a 25-year practice with her husband, notably attended four home births on Christmas Day 1888. She later told the Eagle: "No matter how dark the night, how muddy the street or road, I could always take care of myself, just as well as a man doctor, and better than some of them." She took care of even the poorest patients as well, sometimes noting in her ledger, "no father, no fee."

Stephens, St. John and female colleagues including Dr. Mary Gage Day, who were members of the MSSC predecessor South Kansas Medical Society, promoted their medical practices in local newspaper ads through the 1880s and 1890s, sometimes touting "diseases of women a specialty."

First woman MSSC member

The first woman to join MSSC may have been Dr. Sarah Noble, a 39-year-old Clearwater physician voted in on Jan. 18, 1910, with neither dissent nor fanfare, according to meeting minutes. Noble presented a paper at a May meeting before moving to Chicago that September.

Dr. Helen Moore, who joined MSSC in 1918 after moving to Wichita from Illinois, left for Topeka three years later to head the Kansas Bureau of Child Hygiene.

The first woman to make a durable mark on both the community and the society was surely Dr. Frances Schiltz, who joined MSSC in 1924. She was the first female intern at St. Francis Hospital and the first woman to serve as its chief of staff (1935). She also organized and directed women's health services at then-Wichita University, and she was elected MSSC's secretary for 1929-31 and vice president for 1946.

The MSSC roll book in the 1940s counts as members Schiltz and Dr. Ruth Montgomery-Short, Dr. Naomi Viscardi, Dr. Louise Ireland-Frey, Dr. Katherine Pennington, Dr. Ruth Page and Dr. Mildred R. Passmore.

First woman president

Still, by the late 1960s only 4% of MSSC members were women. It would take until 1985 for MSSC to elect a female president — Pennington, a pediatrician and the first female chief of staff at St. Joseph Hospital.

Pennington later reflected that she found few impediments for women in medicine, and that those who established practices during the war years were able to be seen simply as doctors, not just "women doctors."

MSSC wouldn't see another woman president until Dr. Linda Francisco's 2011 term, followed by Dr. Donna Sweet (2014), Dr. Patricia Wyatt-Harris (2020) and Dr. E. Jeanne Kroeker (2022).

A 2020 research project based on oral histories of older MSSC women members found shared experiences of discrimination, harassment and unfair treatment, but few regrets. "All participants were attracted to medicine for altruistic reasons and encountered obstacles, discouragement, and even mockery in their efforts to become physicians. They met diverse challenges with determination, tenacity and hard work," concluded authors Anne Walling, Kari Nilsen and Kimberly J. Templeton.

In 2023, as MSSC reaches the 120-year mark, more than one-third of its more than 1,000 active members are women, as are eight of its 13 board members and officers.

Women now make up more than 50% of medical students. As a result, the number of women physicians in Wichita will continue to grow — to the benefit of us all.



SUICIDE CONTINUED FROM PAGE 1

It can be valuable to prepare for such a conversation. Tips on finding the right time and choosing the right words are available on the National Physician Suicide Awareness Day website at <https://tinyurl.com/4mxrwjrju>.

A study published in the Journal of The Association of American Medical Colleges also advised stating the obvious when visiting with distressed colleagues:

- That you respect them
- Think well of them for getting help
- That you are willing to help them connect with treatment
- That you will continue to be there for them

To help mitigate burnout, which can lead to depression and suicidal ideation, medical systems should support physicians by providing adequate staffing and other resources, reducing administrative burdens and the emphasis on productivity targets, and both encouraging and enabling self-care.

Resources available

There are resources for physicians needing support. MSSC partners with The Battle Within and Frontline Therapy to offer teletherapy services to physicians. MSSC members can receive up to

six free, confidential teletherapy sessions with a vetted therapist. Physicians who are interested can complete an application at thebattlewithin.org/frontlinetherapynetwork.

The Kansas Medical Society also offers an extensive Professionals' Health Program. Learn more at kmsonline.org.

Additional resources are available through organizations such as the Suicide and Crisis Lifeline (call or text 988), the Physician Support Line (1-888-409-0141), the Therapy Aid Coalition, the Suicide Prevention Resource Center and the American Foundation for Suicide Prevention.

Physicians sometimes are reluctant to seek care because of licensing worries, fears of lost work opportunities or fears of appearing "weak." But seeking care can make doctors better providers.

As Klaus stated: "The highest quality of patient care starts with a healthy and resilient health care provider."

► Save the Date

MSSC Annual Meeting, 6-8 p.m., Dec. 5 at The Vail, 210 N. Mosley in Old Town. WSU President Rick Muma and KU officials will discuss the joint bioscience center.

Physician ENGAGEMENT

MSSC held a health care forum on Aug. 22 with featured speaker Sen. Roger Marshall, R-Kansas. Some of the issues discussed included drug costs, prior authorization and Medicare payment reform.



▲ SEN. ROGER MARSHALL, MD, AND KEVIN HOPPOCK, MD



▲ ANDREW HENTZEN, MD, AND CHRISTINA NICHOLAS, MD



▲ BRUCE ELSON, MD, GEORGIE ELSON AND CHERIE GILBAUGH



▲ KIRAN KUMAR AND ARUN KUMAR, MD



▲ BRANDON ROE, HEATHER ROE, DO, MELANIE ROHR, MD, DYLAN SNYDER



▲ DONNA EWY, MD, AND NANCY STUHLIK, MPR



▲ DONNA SWEET, MD, AND ESTEPHAN ZAYAT, MD



▲ SHERYL BEARD, MD, AND JENNIFER THUENER, MD



▲ GAUTHAM REDDY, MD, REBECCA REDDY, MD, AND SEN. ROGER MARSHALL, MD



▲ MSSC PRESIDENT MAURICE DUGGINS, MD, AND JENNIFER JACKSON, MD



▲ ROBIN DURRETT, DO, DASA GANGADHAR, MD, AND NALINI GANGADHAR



▲ LAURA TATPATI, MD, AND MAGGIE WOODS, MD

Walking is good medicine

MSSC is helping promote Walktober next month, a community initiative to encourage people of all ages and abilities to get out and walk. As part of that effort, MSSC is co-sponsoring a "Prescription for Walking" that health care professionals can give patients (download the PDF form at <http://bikewalk-wichita.org/for-health-care-professionals/>).

Studies indicate the benefits of walking can occur at levels less than the old "10,000 steps a day" mantra. Data from the Women's Health Study published in 2019 showed that for women over 45, significant decrease in mortality was seen at just 4,400 steps per day, and the benefits leveled off at about 7,500 steps per day.

A meta-analysis of 15 studies published in the Lancet in 2022 found that for those 60 and older, the benefits leveled off between 6,000-8,000 steps per day. For those younger than 60, benefits leveled off at about 8,000-10,000 steps per day.

10,000 steps per day is a daunting challenge that can discourage some people from trying to walk more. Physicians can recommend walking as a basic tenet of preventive care and emphasize that benefits can occur at lower numbers of steps.

Patient Name: _____

A Prescription for Walking

R_x

Number of minutes: _____

Number of days per week: _____

Intensity: Set a pace that is brisk enough that you can't sing, but not so fast that you can't talk while walking.

STOP if you experience chest pain, shortness of breath or feel ill.

Health Goals:

- Reduce your risk of heart disease and stroke
- Improve your blood pressure, blood sugar levels and blood lipid profile
- Manage your weight
- Improve your mood, energy and stamina
- Reduce your risk of osteoporosis
- Reduce your risk of (or manage) Type 2 diabetes
- Reduce your risk of breast and colon cancer

Resources:

- Bike Walk Wichita: www.BikeWalkWichita.org
- City of Wichita: www.wichita.gov/ParkandRec
- Health & Wellness Coalition of Wichita: www.hwcwichita.org
- Tips and free programs: www.theWalkingSite.com
- Walking Groups: www.prevention.com/fitness/start-walking-group

Physician _____ Date _____



SCHRECK
FINANCIAL GROUP LLC
— SINCE 1957 —

**ENDORSED BY MEDICAL SOCIETY OF
SEDGWICK COUNTY
FOR DISABILITY INCOME PROTECTION
PLANS**

ALSO PROVIDING:

- ♦ 401(K) PLANS & SIMPLE IRA SERVICES
- ♦ FINANCIAL & ESTATE PLANNING
- ♦ LIFE INSURANCE - PERSONAL & BUSINESS
 - ♦ INVESTMENT MANAGEMENT
 - ♦ EMPLOYER PROVIDED GROUP INSURANCE BENEFITS
- ♦ PATIENT MEDICARE EDUCATION

316-685-9296

5940 E Central, Wichita, KS 67208

WWW.SCHRECKFINANCIAL.COM

Securities offered through Registered Representatives of Cambridge Investment Research, Inc., a broker-dealer, member FINRA/SIPC. Schreck Financial Group and Cambridge are not affiliated.

October 5

**HEALTH LAW
INSTITUTE**

FOULSTON
ATTORNEYS AT LAW

**Foulston's annual seminar examines
the most pressing legal issues facing
the healthcare industry.**

**Limited seating is available to join
us at our offices in Kansas City and
in Wichita or virtually online. To
register, visit:**

FOULSTON.COM/HLI

Healthcare Practice Group Chair: **BROOKE BENNETT AZIERE**

In Brief ▶▶▶

New and noteworthy

DO school forming rural network

The Kansas Health Science Center is developing the Kansas Educational Research Network to connect medical students and rural practitioners. The objective is to provide research assistance to physicians in rural and sometimes isolated communities while also creating practical opportunities in the field for students at the Kansas College of Osteopathic Medicine.

"For example, if a practice is struggling with diabetic management, our students could work patient education to help them improve their outcomes and measure what the outcomes were for patients," said Kimberly Long, PhD, chief administrative officer at KHSC-KansasCOM.

KERN will be focused on western and rural Kansas but will extend to eastern Colorado and Nebraska and sometimes beyond. "Our mission is to serve the rural underserved," Long said.

Student group recognized

For the fourth consecutive year, the KUSM-Wichita Family Medicine Interest Group received a Program of Excellence Award from the American Academy of Family Physicians. The award recognizes effective programming and efforts to encourage student interest in family medicine. FMIG also received a 2023 Health Care Hero award from the Wichita Business Journal. Last spring, it partnered with MSSC to hold a "Doc for a Day" event for Black and Hispanic middle and high school students.



Loo-Gross receives award

Colleen Loo-Gross, MD, MPH, received a Diversity & Inclusion Award from the Wichita Business Journal. Loo-Gross leads or serves on several diversity, equity and inclusion committees and initiatives at KUSM-W, where she is an assistant professor of family medicine. She is also a trainer and facilitator on several DEI topics and serves as faculty advisor to two medical student organizations focused on mentorship and recruitment of individuals from communities underrepresented in medicine.

Loo-Gross noted that DEI work can be challenging. "It not only takes time and effort but also intentionality, humility and often a willingness to be uncomfortable," she said.



LOO-GROSS

Krohn retires from residency program

Kim Krohn, MD, MPH, retired as program director of the KUSM-Wichita Family Medicine Residency Program at Wesley Medical Center on June 30, KUSM officials said.

Krohn had served as the program director since 2019 and was the 10th director of the Wesley program.

"I want to thank my longtime friend and colleague, Dr. Kim Krohn, for her service above and beyond during the last three and a half years, the most turbulent time in the residency program's history," said Rick Kellerman, MD, professor and chair of the Department of Family and Community Medicine.



KROHN

◀ **A WINNING TEAM:** PICTURED FROM LEFT: YUTO IWAKUMA, LYNN FISHER, MD, TESSA ROHRBERG, MD, JADA ROSA, MADELEINE DAVIS, SHELBY DURLER, ABBEY FISCHER-MICHEL, DANIA JUMPA, JESSE HOLLINGSWORTH, MAHREN AHSAN, JASON GILCHRIST, KATIE HRENCHER, MD, ASCENSION VIA CHRISTI.

PHILLIPS CONTINUED FROM PAGE 1

different styles. When I first started, we had many file cabinets and manually documented and filed everything with the help of good old typewriters. In addition to transitioning to computers, we evolved from using voice pagers to the two-way digital pagers to cell phones for calls and texting. Some physicians joke about putting their old pagers in a time capsule for someone to find.

What do you like best about working for MSSC?

The best part is the relationships with physicians, their spouses and their employees. I consider them all to be extended family. Sharing in the experience of our members retiring, and some passing on, also makes me feel connected to them. Seeing the new generations of physicians become members warms my heart. Our events are always exciting for me, as our members are able to connect with

each other on a different level.

What about your family?

I am married to Patrick, who was diagnosed with cancer last November and has been going through treatment (which has caused me to learn new facets of health care and made me appreciate our wonderful physicians even more). My faith is the cornerstone and shows me my purpose with my family and life in general. We have three adult sons, all of whom currently live in Wichita. Our oldest was married earlier this month. We are very thankful our youngest decided to move back in June from Maui. My parents, sisters and their families live in Wichita, which is another wonderful blessing. We get together often, celebrating everything and rallying together in tough times. I am truly blessed and grateful.

ROSTER UPDATE

Keep your 2023 roster current with this information.

Key: [BC] Board Certified [F] Accredited Fellowship [R] Residency [AT] Additional Training [F*] Unaccredited Fellowship

NEW MEMBERS



Khawla M. Abusamra, MD

[R] Neurology [R] Ophthalmology
[F*] Neuro-Ophthalmology
[F*] Uveitis & Ocular Immunology
NMC Health Neurology Specialists
OFF: 316-283-4005 | FAX: 316-283-1664
800 Medical Center Dr
Newton, KS 67114
NPI: 1972969657

Medical education obtained at University of Jordan, Amman 1997-2003. Internship at Jordan University Hospital, Amman 2003-2004. Residency in Ophthalmology at University of Jordan 2004-2008. Fellowship in Neuro-Ophthalmology at Michigan State University, East Lansing 2012-2013. Fellowship in Uveitis & Ocular Immunology at Massachusetts Eye Research & Surgery Institution, Waltham, MA 2015-2016. Residency in Neurology at University of Kentucky, Lexington 2019-2023.



Faris S. Azzouni, MD

[R] Urology [F] Pediatric Urology
[F*] Urologic Oncology
NMC Health Urology Specialists
OFF: 316-804-6200 | FAX: 316-284-5081
800 Medical Center Dr
Newton, KS 67114
NPI: 1619110608

Medical education obtained at University of Jordan, Amman 1994-2000. Internship at Ministry of Health, Amman 2000-2001. Residency in Surgery at Temple University Hospital, Philadelphia 2002-2003. Residency in Urology at Jordan University Hospital, Amman 2004-2008. Fellowship in Pediatric Urology at Medical College of Wisconsin, Milwaukee 2009-2010. Fellowship in Urologic Oncology at Roswell Park Comprehensive Cancer Center, Buffalo, NY 2010-2013.



Elie Chalhoub, MD

[BC] Internal Medicine
[BC] Hematology
[BC] Medical Oncology
Cancer Center of Kansas, PA
OFF: 316-262-4467 | FAX: 316-262-0706
818 N Emporia S-403, 67214
NPI: 1336451665

Medical education obtained at Lebanese University, Hadath, Lebanon 2002-2009. Residencies in Internal Medicine at Lebanese University 2009-2010 and KUSM-Wichita 7/2010-6/2013. Fellowship in Hematology & Medical Oncology at Tulane University, New Orleans 7/2013-6/2016.



G. Aron Fast, MD

[BC] Family Medicine
Partners in Family Care
OFF: 620-327-2314 | FAX: 620-327-0135
371 N Hwy 81
Hesston, KS 67062
NPI: 1295992121

Medical education obtained at KUSM-Wichita 8/2004-5/2008. Residency in Family Medicine at KUSM-Wichita 7/2008-6/2011.



Lauren B. Ferrell, MD

[BC] Family Medicine
KUSM-Wichita Family Medicine Residency at Wesley
OFF: 316-962-3070 | FAX: 316-962-3136
850 N Hillside, 67214
NPI: 1518345537
Medical education obtained at KUSM-Kansas City 7/2011-5/2015. Residency in Family Medicine at Smoky Hill Family Medicine Residency, Salina 7/2015-6/2018.



Kenneth Fraser, MD

[R] Psychiatry
KUSM-Wichita Psychiatry
OFF: 316-293-2647 | FAX: 855-476-0305
1001 N Minneapolis, 67214
NPI: 1962060376

Medical education obtained at KUSM-Wichita 7/2014-5/2019. Residency in Psychiatry at KUSM-Wichita 7/2019-6/2023.



Julia Kononowicz, MD

[R] Pediatrics
KUSM-Wichita Pediatric Hospitalists
OFF: 316-962-7422 | FAX: 316-962-7805
550 N Hillside Mail Stop 853, 67214
NPI: 1992322051

Medical education obtained at Poznan University of Medical Sciences, Poland 7/2015-5/2020. Residency in Pediatrics at KUSM-Wichita 7/2020-6/2023.



Edward Nola, MD

[R] Family Medicine
Ascension Medical Group Via Christi East 21st
(10/01/23)
OFF: 316-274-4501 | FAX: 316-636-4076
9211 E 21st St N, 67206
NPI: 1841812229

Medical education obtained at KUSM-Wichita 8/2016-5/2020. Residency in Family Medicine at KUSM-Wichita 7/2020-6/2023.

**Healthcare banking
for healthy results.**

Simmons Bank has decades of healthcare banking experience and undeniable expertise. But it's our unique, customizable treasury and revenue cycle management solutions that guide you toward a healthy financial future.

We are a one-stop shop for all your healthcare banking needs, offering flexible financing to construct or expand your practice and equipment leasing to help you keep up with technology innovations.

Contact us today and learn how our healthcare banking specialists can help ensure your healthy future.



Member FDIC | simmonsbank.com

Dreams: **Realized**

ROSTER UPDATE *continued*

Keep your 2023 roster current with this information.

Key: [BC] Board Certified [F] Accredited Fellowship [R] Residency [AT] Additional Training [F*] Unaccredited Fellowship



Kyle J. Smothers, MD

[R] Otolaryngology-Head & Neck Surgery
Mid-Kansas ENT Associates
OFF: 316-684-2838 | FAX: 316-684-3326
10090 E Shannon Woods, 67226
NPI: 1942707021

Medical education obtained at University College Dublin School of Medicine, Ireland 8/2014-6/2018. Residency in

Otolaryngology-Head & Neck Surgery at University of Louisville School of Medicine, KY 7/2018-6/2023.

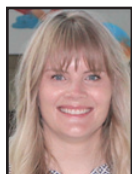


Ana Stark, MD

[R] Internal Medicine [F] Nephrology
Kansas Nephrology Physicians, PA
OFF: 316-263-7285 | FAX: 316-263-2666
1035 N Emporia S-105, 67214
NPI: 1811188758

Medical education obtained at KUSM-Kansas City 8/2013-5/2017. Residency in Internal Medicine at St.

Agnes Medical Center, Fresno, CA 7/2018-8/2019 and Greater Baltimore Medical Center, Towson, MD 10/2019-9/2021. Fellowship in Nephrology at Ochsner Medical Center, New Orleans 9/2021-7/2023.



Trista A. Vancuren, MD

[R] Pediatrics
Redbud Pediatrics
OFF: 316-201-1202 | FAX: 316-201-1251
8725 E 32nd St N, 67226
NPI: 1841814241

Medical education obtained at KUSM-Wichita 8/2016-5/2020. Residency in Pediatrics at University of Okla-

homa College of Medicine, Oklahoma City 7/2020-6/2023.

CHANGES

Samuel W. Amstutz, MD

David M. Chacko, MD, PhD

Martin de la Presa, MD

Diana M. Leitner, MD

Michele M. Riggins, MD

Greene Vision Group

Primary location: 1821 N Webb Rd 2nd Fl, 67206

OFF: 316-684-5158

FAX: 316-681-1005

Christopher D. Cassidy, MD

Abbie L. Collinworth, MD

Francie H. Ekengren, MD

Gregory A. Esparza, MD, PhD

David J. Hartig, DO

Aaron Lentz, MD

C. Joseph O'Donnell, DO

Melissa V. Ortiz, MD

Nathaniel M. Yoder, DO

CarePoint Healthcare

OFF: 316-962-7190

FAX: 316-962-7100

Kara D. Cox, MD

Primary location: AOA NOW Orthopedic Immediate Care

OFF: 316-631-1600 | FAX: 316-631-1617

9828 E Shannon Woods S-100, 67226

Jordan D. Groskurth, MD

[BC] Thoracic & Cardiac Surgery

Wichita Surgical Specialists, PA

Bethany G. Harpole, MD

[BC] Thoracic & Cardiac Surgery
Wichita Surgical Specialists, PA

Stefanie M. Kempke, MD

[BC] Obstetrics & Gynecology

Primary location: PrairieStar

Health Center

OFF: 620-663-8484

2700 E 30th Ave

Hutchinson, KS 67502

Colin B. Lisenby, MD

2nd location: AOA NOW Orthope-

dic Immediate Care

OFF: 316-631-1600

FAX: 316-631-1617

9828 E Shannon Woods S-100,

67226

Todd W. Murphy, MD

Wichita Trauma & Surgical Critical

Care Associates, LLC

6446 E Central S-326, 67206

Same phone

Tara J. Neil, MD

[BC] Family Medicine

Dedicated Senior Medical Center

OFF: 316-867-6444

FAX: 316-867-6443

2402 E 13th St, 67214

Mercedes Perales, MD

Prairie View, Inc

OFF: 316-729-6555 | FAX: 316-

634-4794

7570 W 21st St N S-1026D, 67205

Scott L. Stringfield, MD

[BC] Family Medicine

OFF: 316-253-0200

2511 N Cranbrook Ct, 67226

Email: sstringfield@gmail.com

Charles R. Whitfill, MD

Greene Vision Group

2nd location: 1821 N Webb Rd,

2nd Fl, 67206

RETIRING

Ron J. Marek, DO – 8/25/23

Dimitrios Stephanopoulos, MD

– 8/31/23

DROPPING

Mohammad Abdel Jawad, MD –

Moved out of area

Salman A. Hasan, DO – Moved

out of state

Kyle M. Lemley, MD – Moved out of state

Francis P. Soans, MD – 8/31/23

Anis Toumeh, MD – Practicing out of area

Claudia X. Wendell, MD – Moving out of area

In Remembrance

Renowned rheumatologist Frederick Wolfe, MD, left legacy of knowledge

MSSC extends its condolences to the family of Dr. Wolfe.

Frederick Wolfe, MD, who founded the Wichita Arthritis Center in 1974 and was one of the first doctors to define the cluster of symptoms known as fibromyalgia, died Sept. 5. He was 87.

At the Wichita Arthritis Center, Wolfe began a long career in rheumatology clinical research with the founding of the Arthritis Research Center Foundation and the National Databank for Rheumatic Diseases. There, he became an early adopter of computerized medical records and collected large volumes of patient data from his clinic and others, his family said. Wolfe used that data for rheumatology clinical research, and he was the lead or co-author on hundreds of peer-reviewed research papers, which have been cited by other scholars more than 125,000 times.

Wolfe is survived by his wife, Donna; children Aaron Wolfe, Ezra Wolfe and David Wolfe; sister, Susan Sanders; and five grandchildren.



DR. WOLFE

MSSC NEWS

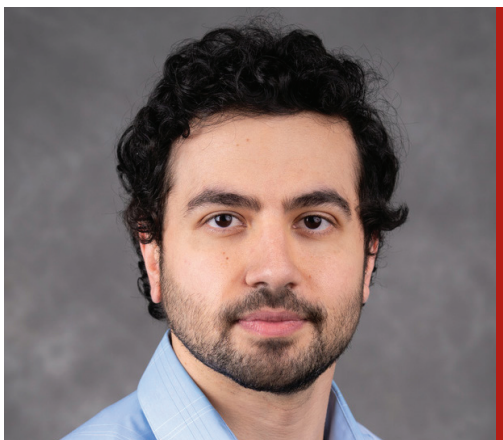
MEDICAL SOCIETY of
SEDGWICK COUNTY 1102 South Hillside • Wichita, KS 67211
www.mssconline.org • (316) 683-7557

The MSSC News is published monthly by the Medical Society of Sedgwick County, Kansas. The Society does not necessarily endorse all the views expressed in this publication.

Managing Editor: Phillip Brownlee, Executive Director

ADDRESS SERVICE REQUESTED

Presorted
Standard
U.S. Postage
PAID
Wichita KS
Permit No. 640



**YAZAN ALKAWALEET,
M.D., F.A.C.C.**

Board Certified in: Cardiovascular Diseases,
Interventional Cardiology – Board Eligible,
Echocardiography, and Nuclear Cardiology

Heartland
Cardiology
proudly
announces
the addition
of two new
physicians!



**MAHEEDHAR GEDELA, M.D.,
F.A.C.C., F.S.C.A.I.**

Board Certified in: Cardiovascular Diseases,
Interventional Cardiology, Echocardiography,
Nuclear Cardiology, and
Cardiac Computed Tomography

Call for an appointment: 316-686-5300